

LOTTIE CANTO

COLOUR PALETTE

BLUE

Effect- Reverb

Adjust Control- Reverb Size

INDIGO

Effect- Shimmer Reverb

Adjust Control- Reverb Size

PURPLE

Effect- Modulated Reverb

Adjust control- Reverb Size

PINK

Effect- Parallel Reverb and Delay

Adjust Control- Delay Time

ORANGE

Effect- Slapback Delay

Adjust Control- Delay Time

CORAL

Effect- Delay With Repeats

Adjust Control- Delay time

PEACH

Effect- Modulated Delay

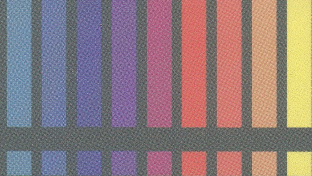
Adjust Control- Delay Time

YELLOW

Effect- Shimmer Delay

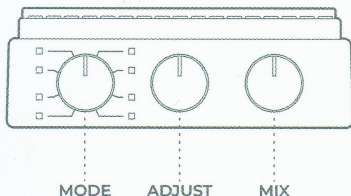
Adjust Control- Delay Time

If you have any questions contact me on lottiecanto@gmail.com and don't forget to tag [@lottiecanto](https://www.instagram.com/lottiecanto) in your photos and videos of your Colour Palette on Instagram.



LOTTIE CANTO

COLOUR PALETTE

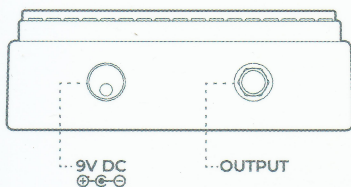


Controls

MODE- Choose between 8 effects. Details of these listed overleaf.

ADJUST- Changes a different parameter dependent on the effect.

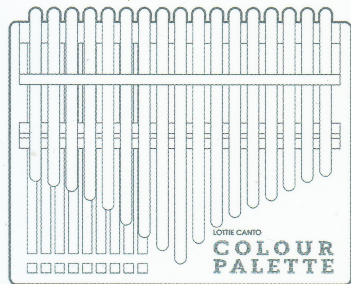
MIX- controls the amount of effect.



Power and Output

The Colour Palette runs on a standard pedal power supply. 9v DC centre negative power adapter.

The output is a single mono 1/4 inch jack. Perfect for using with existing pedal set ups.



Tuning

To tune your Colour Palette, use the included metal hammer to tap the tines forward and backwards to achieve the correct note. If you have a pedal tuner or other digital tuner you can plug the Colour Palette directly in to it. To tune up you make the tine shorter and to tune down you make it longer. This also means you can experiment with alternate tunings.